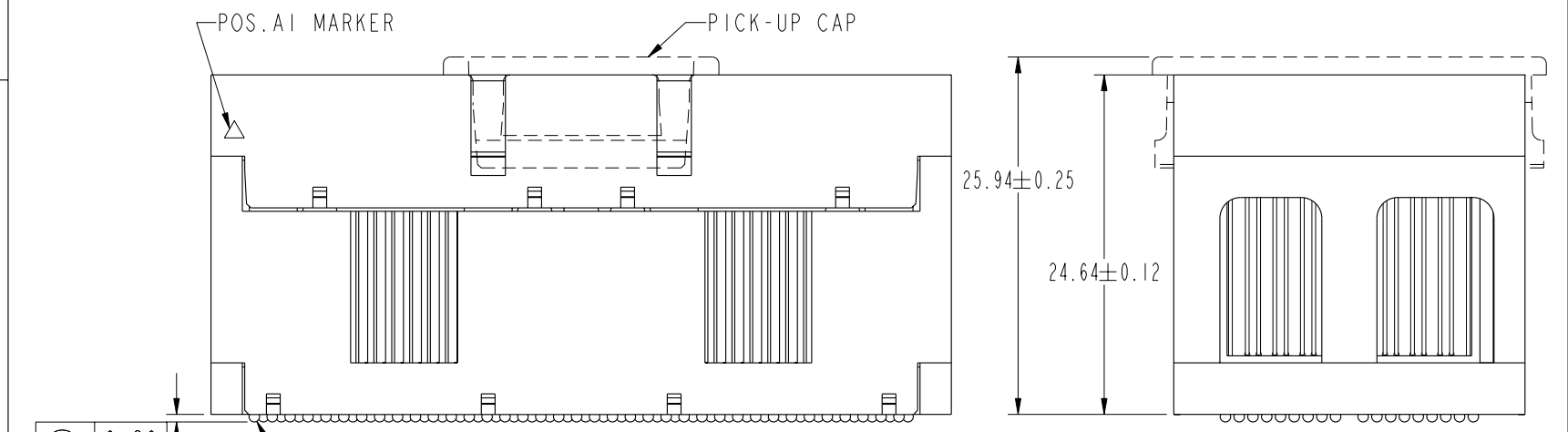
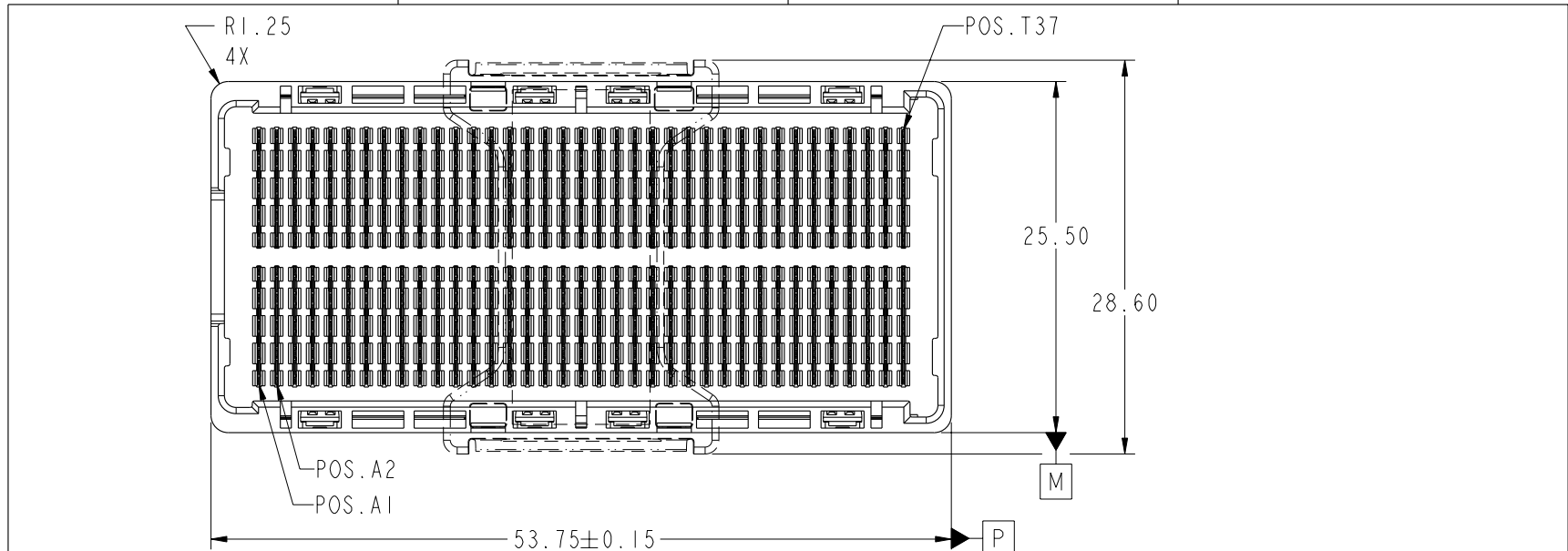




This document is the property of and embodies CONFIDENTIAL and PROPRIETARY information of FCI. No part of the information shown on this document may be used in any way or disclosed to others without the written consent of FCI. Copyright FCI.

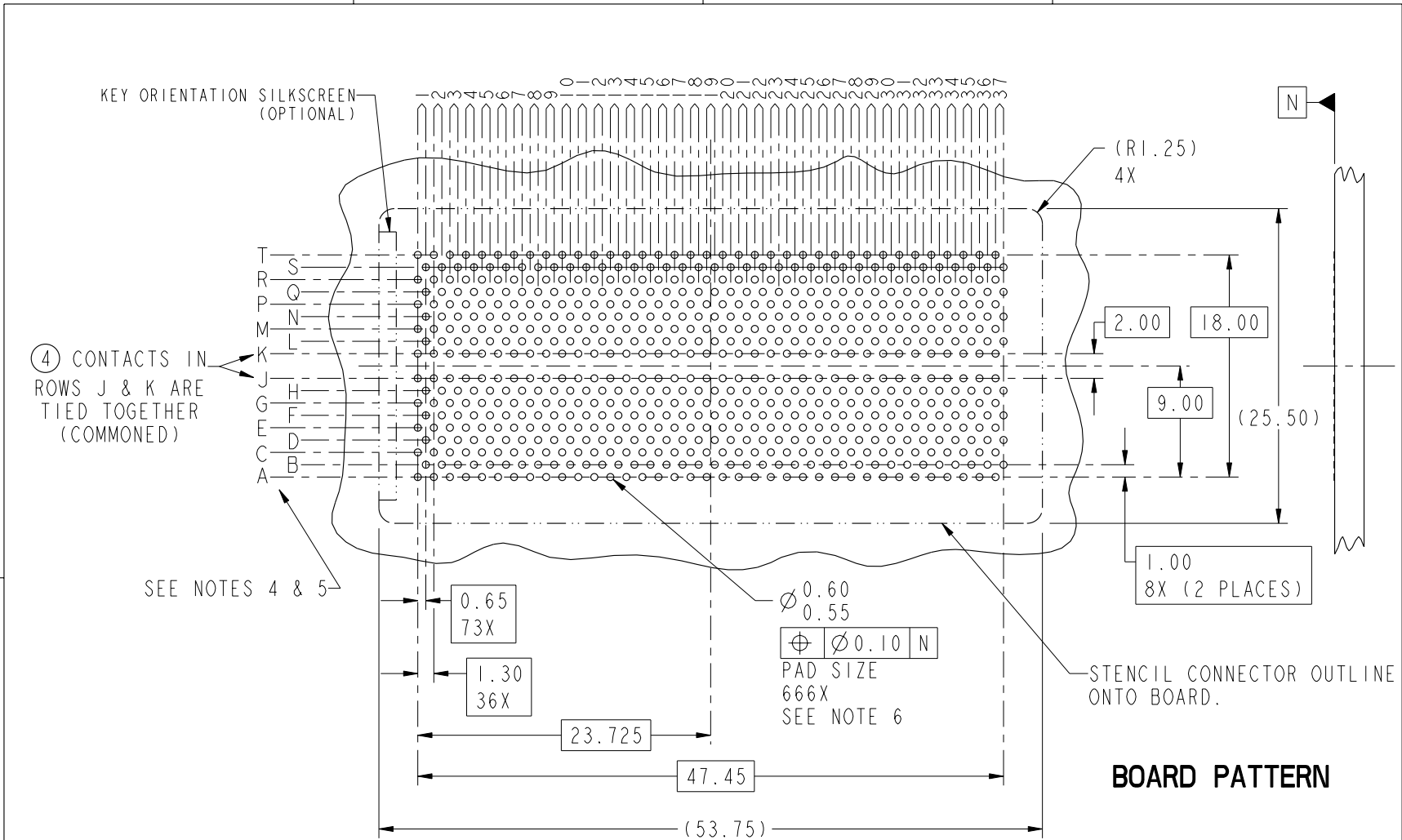


0.20
(0.55)
Ø0.76 SOLDER BALLS
⊕ Ø0.30 P M
666X
SEE NOTE 2

mat'l code		SEE NOTE 1				tolerances unless otherwise specified		CUSTOMER		FCI www.fciconnect.com	
ltr	ecn no.	dr	date		linear	0.X ±0.3		COPY		title	
A	V05-0335	TAB	04/25/05			0.XX ±0.10		projection		GIG-Array	
B	V06-0239	LP	3/27/06		angles	0.XXX ±0.050				25mm PLUG ASSY. 296 SIG. POS.	
C	V06-0558	LP	2006/06/21			0° ±2°				product family	
D	V07-0440	LP	2007-07-09		dr	T. BRUNGARD	04/25/05	MM		code	213
					enrg	D. HARPER	04/25/05	← MM →		size	1 of 5
					chr	D. HARPER	04/25/05	scale		dwg no	10054784
					appd	D. HARPER	04/25/05	1:2		A	
sheet	revision	D	D	D	D	D	D				
index	sheet	1	2	3	4	5				cage code	22526



This document is the property of and embodies CONFIDENTIAL and PROPRIETARY information of FCI. No part of the information shown on this document may be used in any way or disclosed to others without the written consent of FCI. Copyright FCI.

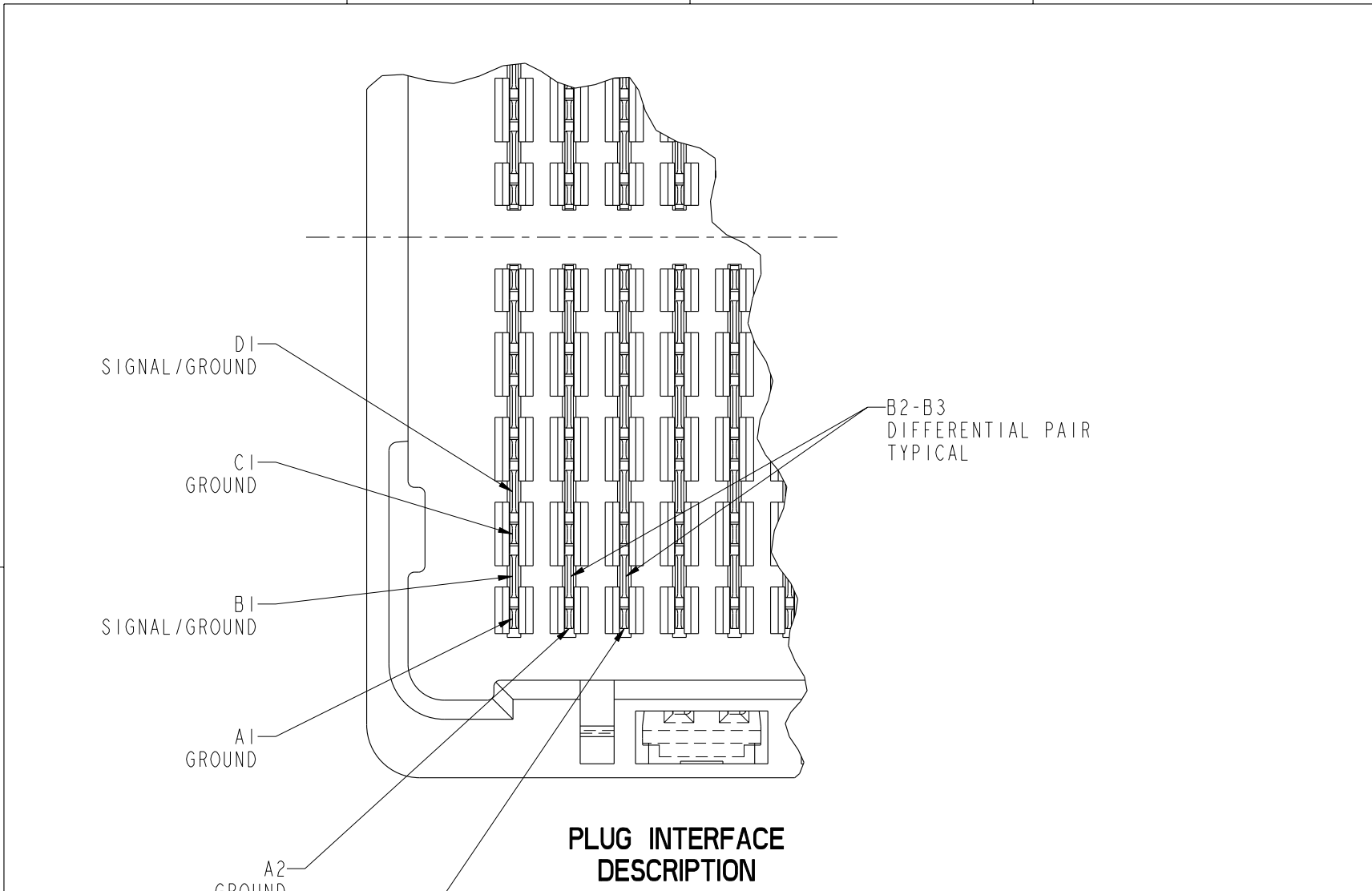


BOARD PATTERN

mat'l code				SEE NOTE 1		tolerances unless otherwise specified		CUSTOMER		FCI www.fciconnect.com	
ltr	ecr no.	dr	date	linear	0.X ± 0.3		COPY		projection	title	
D	-	-	-		0.XX ± 0.10		MM			GIG-Array	
				angles	0.XXX ± 0.050		←		25mm PLUG ASSY. 296 SIG. POS.		
					0° ± 2°		2:1		product family GIG-Array code		
				dr	T. BRUNGARD	04/25/05	scale		size	dwg no	213
				engr	D. HARPER	04/25/05	A		10054784		sheet
				chr	D. HARPER	04/25/05					2
				appd	D. HARPER	04/25/05					
sheet index	revision sheet								cage code	22526	



This document is the property of and embodies
 CONFIDENTIAL and PROPRIETARY information of FCI.
 No part of the information shown on this
 document may be used in any way or disclosed
 to others without the written consent of FCI.
 Copyright FCI.



PLUG INTERFACE DESCRIPTION

mat'l code				SEE NOTE 1		tolerances unless otherwise specified		CUSTOMER		www.fciconnect.com	
ltr	ecn no.	dr	date	linear	0.X ±0.3		COPY			title	
D	-	-	-		0.XX ±0.10		MM			GIG-Array	
				angles	0.XXX ±0.050				25mm PLUG ASSY. 296 SIG. POS.		
					0° ±2°		7:1		product family GIG-Array code		
				dr	T. BRUNGARD	04/25/05	scale		size		
				engr	D. HARPER	04/25/05	A		10054784		
				chr	D. HARPER	04/25/05			213		
				appd	D. HARPER	04/25/05			sheet		
sheet index		revision sheet								3	

cage code 22526 4

Pro/E

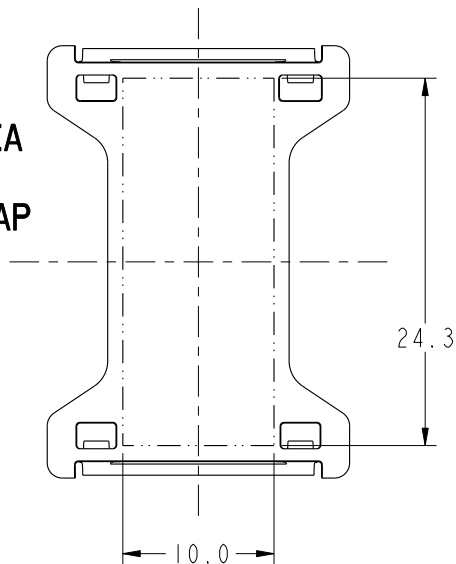
PDM: Rev:D

STATUS: Released

Printed: Aug 05, 2008

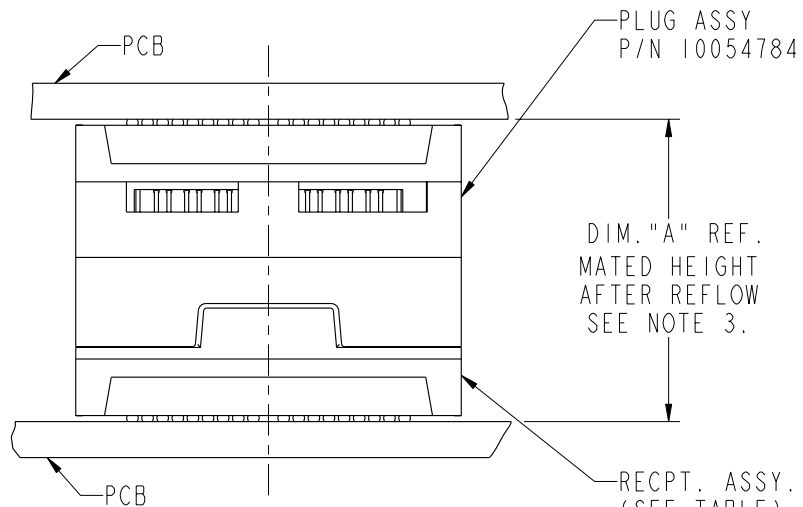
PRODUCT NUMBER	SOLDER BALL
10054784-001	SnPb
10054784-001LF	SnAgCu LEADFREE SEE NOTE 7 8

FLAT AREA
FOR
PICK-UP CAP



NOTES:

- ① MAT'L:
HOUSING: LCP
CONTACT: COPPER ALLOY
PLATING (CONTACT): Au OVER Ni.
UL RATING: 94 V-0
SOLDER BALL: (SEE TABLE) EUTECTIC
SnPb OR LEADFREE 95.5 Sn/4Ag/0.5Cu
- ② SOLDER BALLS WILL NOT BE PERFECT SPHERICAL SHAPE DUE TO REFLOW ATTACHMENT.
- ③ MATED HEIGHT EFFECTED BY CUSTOMERS' PCB PAD SIZE, PLATING, SOLDER REFLOW PROFILE & SOLDER PASTE.
- ④ CONTACTS IN ROWS A,C,E,G,J,K,M,P,R AND T ARE SINGLE BEAM CONTACTS USED AS GROUND PINS.
(NOTE: CONTACTS IN ROWS J & K ARE TIED TOGETHER [COMMONED])



END VIEW OF MATED CONNECTORS

DIM. "A"	RECPT. ASSY. P/N
30	55701
35	10032376
40	55733

NOT TOOLED

mat'l code				SEE NOTE 1		tolerances unless otherwise specified		CUSTOMER		FCJ www.fciconnect.com	
ltr	ecn no.	dr	date	linear	0.X ±0.3		COPY		projection	title	
D	-	-	-		0.XX ±0.10		MM			GIG-Array	
					0.XXX ±0.050		← MM →			25mm PLUG ASSY. 296 SIG. POS.	
				angles	0° ±2°		scale		product family		
				dr	T. BRUNGARD 04/25/05		1:2		GIG-Array		
				enrg	D. HARPER 04/25/05				code		
				chr	D. HARPER 04/25/05				size		
				appd	D. HARPER 04/25/05				dwg no		
sheet index		revision sheet								A 10054784	
										213 sheet 4	

This document is the property of and embodies CONFIDENTIAL and PROPRIETARY information of FCJ. No part of the information shown on this document may be used in any way or disclosed to others without the written consent of FCJ. Copyright FCJ.

- ⑤. CONTACTS IN ROWS B,D,F,H,L,N,Q AND S ARE DUAL BEAM CONTACTS, TYPICALLY USED AS SIGNAL PINS.
- ⑥. SPECIFIED POSITIONAL TOLERANCE DEFINES PAD TO PAD LOCATION WITHIN LAND PATTERN. POSITIONAL TOLERANCE OF LAND PATTERN TO FUDICIAL MARKS OR PCB DATUMS SHALL BE DEFINED BY CUSTOMER. FOR RECOMMENDED PRODUCT APPLICATION AND PCB DESIGN DETAILS, SEE DOC. NO. GS-20-016.
- ⑦. FOR PROPER APPLICATION FOLLOW FCI APPLICATION SPECIFICATION GS-20-033 LEADFREE SOLDER BALLS WILL NOT SOLDER PROPERLY IN A LEADED SOLDER PROCESS DUE TO A HIGHER REFLOW TEMPERATURE, LEADFREE PRODUCT IS THEREFORE NOT BACKWARDS COMPATIBLE WITH LEADED OR SOME SOLDERING APPLICATIONS. REFERENCE FCI APPLICATION SPECIFICATION.
- ⑧. THIS PRODUCT MEETS THE EUROPEAN UNION DIRECTIVES AND OTHER COUNTRY REGULATIONS AS DESCRIBED IN GS-22-008 PRODUCT MEETING THIS DIRECTIVE IS IDENTIFIED IN THE LOT CODE NUMBER MARKED ON EACH PART BY HAVING AN "X" IN THE SEVENTH CHARACTER POSITION.

A

A



This document is the property of and embodies CONFIDENTIAL and PROPRIETARY information of FCI. No part of the information shown on this document may be used in any way or disclosed to others without the written consent of FCI. Copyright FCI.

B

B

mat'l code				0		tolerances unless otherwise specified		CUSTOMER		www.fciconnect.com	
ltr	ecr no.	dr	date	linear	0.X ±0.3		COPY			title	
D					0.XX ±0.10		projection			GIG-Array	
					0.XXX ±0.050					25mm PLUG ASSY. 296 SIG. POS.	
				angles	0° ±2°				product family		
				dr	T. BRUNGARD	04/25/05	MM		GIG-Array		code
				engr	D. HARPER	04/25/05			size		213
				chr	D. HARPER	04/25/05	scale		A		sheet
				appd	D. HARPER	04/25/05	1:2		10054784		5
sheet index		revision sheet									